

Industry & Trade



Competency in tubes and components

fischer
group



“For more than 50 years, more and more customers have come to know and appreciate the particular reliability of fischer tubes and components.”

Globally leading quality

fischer stainless steel tubes are in demand in many areas

In the fischer group, extraordinary quality thinking has decades of tradition. We have been producing longitudinally welded stainless steel tubes since 1974. Every year, around 2,700 employees process over 169,000 tonnes of steel into more than 127 million meters of tubing. Over the years, more and more sophisticated materials such as titanium and nickel-based alloys have been added. From these we produce tubing of the highest strength, temperature and corrosion resistance.

Tube competence runs in the family

The fischer group cultivates its particularly family-style company culture in all divisions: from machine technology business Maschinentechnik, founded in 1969, to stainless steel tubing division Edelstahlrohre, since 1990 in tube technology company Rohrtechnik and since 2007 in Hydroforming. Concentrated competence in all areas of tubing is the result.

fischer Edelstahlrohre

Production of longitudinally welded tubing from stainless steel, titanium and nickel-based alloys

fischer Rohrtechnik

Further processing of tubes into components and subassemblies

fischer Hydroforming

Development and production of complex hydroformed components

fischer Maschinentechnik

Development of machines and tools for tube production and further processing



The fischer management team:
The managing partners Hans-Peter Fischer (center) and Roland Fischer (right) together with the commercial director Björn Weber (left)

Employees



worldwide around

2,700

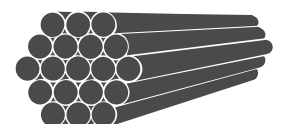
Meters of tubing



per year more than

127 million

Quantity of material



per year more than

169,000 t

Tubing for the industries of the world

Whether it is in oil and gas extraction, the sanitary industry, equipment and plant construction, the chemical and petrochemical industry, the household appliance and electrical industry or in trade: fischer tubes give your application more security, more stability and a longer service life.

Process industry and energy supply

In power plants, energy supply and the process industry, alloyed steel tubes and components in particular are exposed to the highest loads. The fischer group develops, manufactures and supplies you with the right components for these requirements: highly corrosion-resistant, with the best mechanical and physical properties in ideal material grades, appropriate diameters and lengths.



Heat exchanger tubes in plant engineering

Special fischer heat exchanger tubes are used, among other things, for heating, cooling and reheating liquids, gases or air in a wide variety of industries.

fischer tubes are the first choice where liquids and gases have to be transported safely.



Your contact person for Industry & Trade

"Let's talk about your special projects.
Together we'll find tailor-made concepts for you –
anywhere in the world."

Guido Eckenwalder
Sales Director Industry & Trade
Phone +49 7841 6803-567
guido.eckenwalder@fischer-group.com



Proven in many industries

Where fischer tubes are used

High grade materials, processed in special fischer quality, provide sustainable tube solutions in many industrial applications around the world. Reliable in the long term, even under the most adverse conditions.

Oil and gas

- Line pipes
- Supply lines
- Riser pipes

Trade

- Stock replenishment
- Individual orders
- Special geometries
- Project business

Sanitary

- Drinking water pipes
- Water treatment
- Swimming pool and sanitary facilities

Chemical and petrochemical industry

- Bundle tubes for hydraulic lines
- Equipment and heat exchangers

Household appliances and electrical industry

- Pipes for domestic water stations
- Heaters for kitchen appliances
- Vacuum cleaner tubes
- Linkage for commercial kitchen appliances

Green Tech

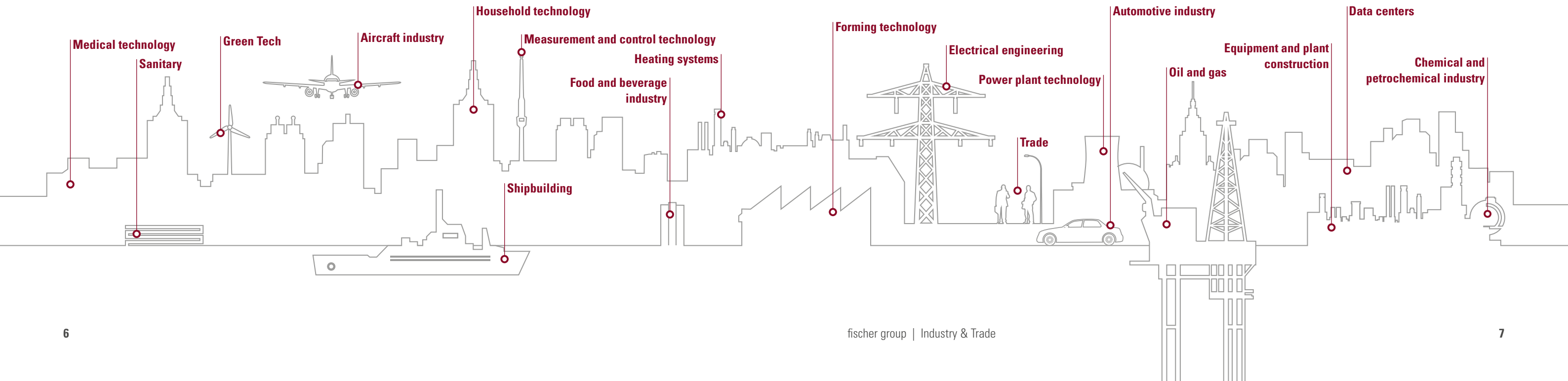
- Hydrogen-carrying tubes
- Carbon Capture Storage

Equipment and plant construction

- Condensers
- Preheater tubes
- Process measuring and control technology
- Heat exchangers

Data centers

- Piping systems for cooling





For the highest demands

Sophisticated processes for exact shapes

fischer tubes are made to meet the highest demands. The welding processes are continuously monitored and optimized so you can always rely on precise processing from the first to the last meter of tubing. Whatever your requirements, the specialists at the fischer group will precisely shape your high-quality tubes. In globally uniform high fischer quality.

Material groups

Always the appropriate material

- Austenitic
- Ferritic
- Super ferritic
- Duplex
- Super duplex
- Nickel base
- Titanium

Delivery range

Any desired size

- Outer diameter: from 6 to 206.0 mm
- Wall thicknesses: from 0.1 mm possible
- Lengths: straight tubes up to 36 m, U-tubes up to 15 m
- Continuous production in coils: up to 3,000 m, depending on wall thickness more also possible

Finishes

According to your requirements

- Longitudinally laser welded, weld factor V=1.0
- Unannealed with metallic, smooth surface
- Heat treated with metallic, smooth surface
- Narrow tube tolerances
- Straight tubes, U-tubes

Machining

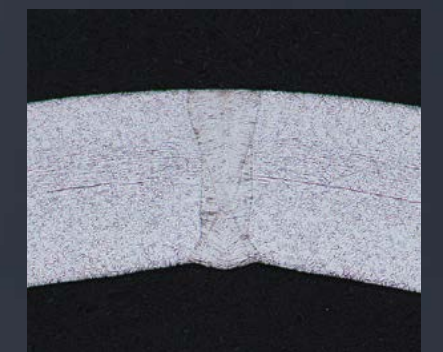
In any desired shape

- Laser cutting and contour cuts
- Sawing
- Bending
- Grinding
- Tube end forming
- Hydroforming
- Wide range of further processing options for tubes
- Heat treatment

“Uncompromisingly precise and extremely stable: for long-term use under the toughest conditions.”

Extremely durable welds

fischer has optimized laser welding so far that, in extreme cases, the tubes fail in the base material first before the weld breaks!



Quality by conviction

Part of the company's identity right from the start

The fischer group lives up to extraordinary quality standards in all areas of the company. Internationally recognized quality management systems and certifications are an expression of this fundamental conviction. All fischer tubes are continuously tested for the highest standard-compliant quality. All common destructive and non-destructive test methods and corrosion tests are used. Additional customer-specific test procedures can be carried out on request.

Non-destructive tests

- Eddy current
- Ultrasound
- Air under water
- Dimensional inspection and length measurement technology
- Surface inspection (roughness)

Corrosion tests

- Intercrystalline corrosion test
- Check for corrosion residues
- G48 test

Destructive tests

- Chemical analysis / spectral analysis
- Tensile test
- Drift expanding test
- Technological tests
- Hardness testing
- Metallographic inspection

Standards

- DIN EN 10204
Acceptance test certificates for metallic products
- DIN EN 10296-2
Welded steel pipes for general service
- EN 10217-7
Welded steel tubes for pressure purposes
- AD 2000 data sheet W2
code of practice for the construction of pressure vessels
- ASTM A249 / ASME SA249M
- ASTM A312 / ASME SA312M
- ASTM A789 / ASME SA789M

Certifications and approvals

- DIN EN ISO 9001:2015
Internationally recognized standard for quality management
- IATF 16949:2016
International quality standard of the automotive industry
- DIN EN ISO 14001:2015
Internationally recognized standard for environmental management
- DIN EN ISO 50001:2018
Internationally recognized standard for energy management
- DIN EN ISO 3834-2
Tested welding quality at the highest level
- Certificate AD 2000 Leaflet W0 Welding
Competence for pressure vessels and piping systems
- Material manufacturer according to Directive 2014/68/EU – EN 764-5:2014
- H2 Readiness according to TÜV SÜD test standard



ISO 9001:2008 | ID:0910170483

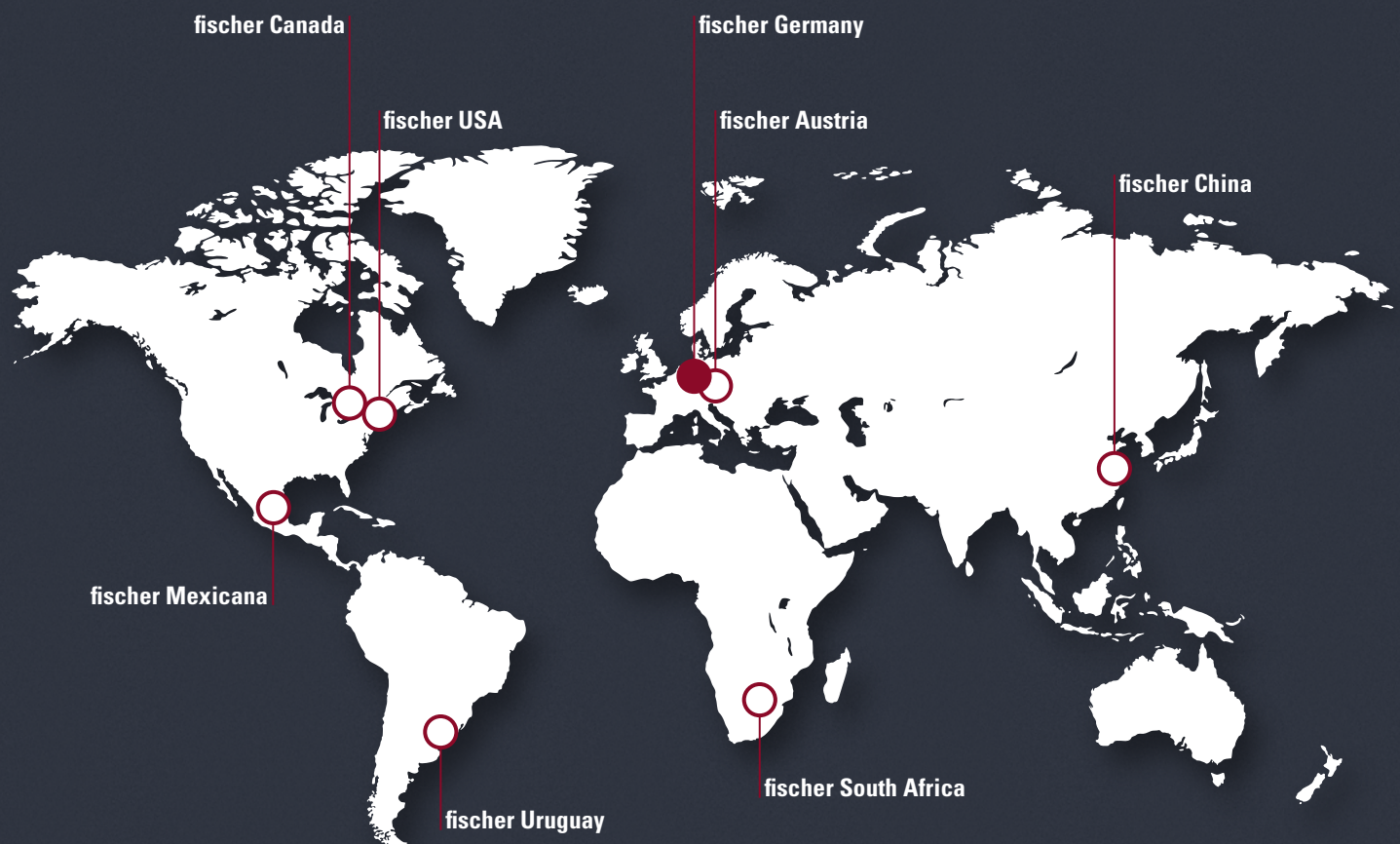


WZ 520 HH 4



All around the world

The fischer group and its international locations



Im Gewerbegebiet 7
77855 Achern-Fautenbach, Germany
Phone +49 7841 6803-0
sales@fischer-group.com
www.fischer-group.com